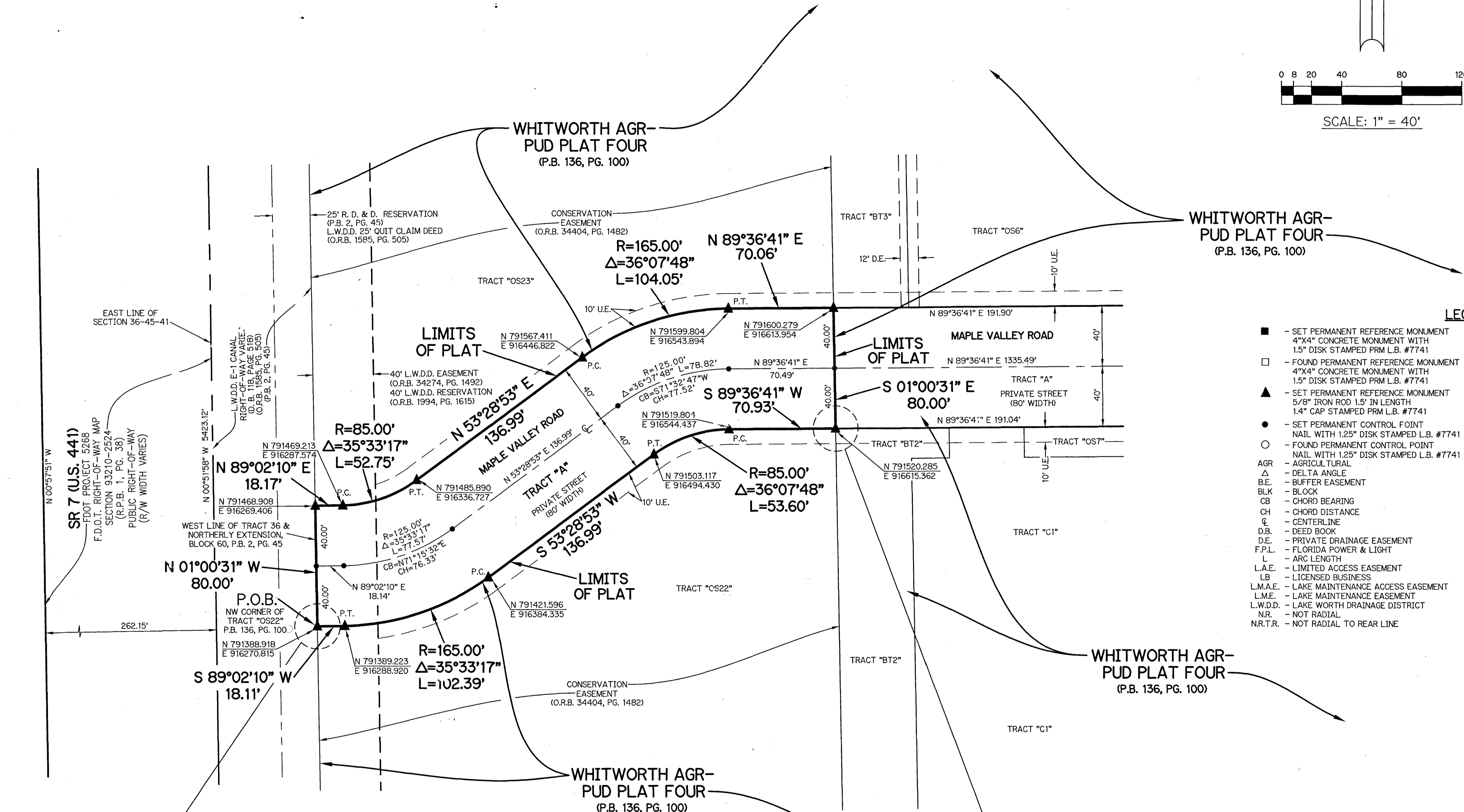
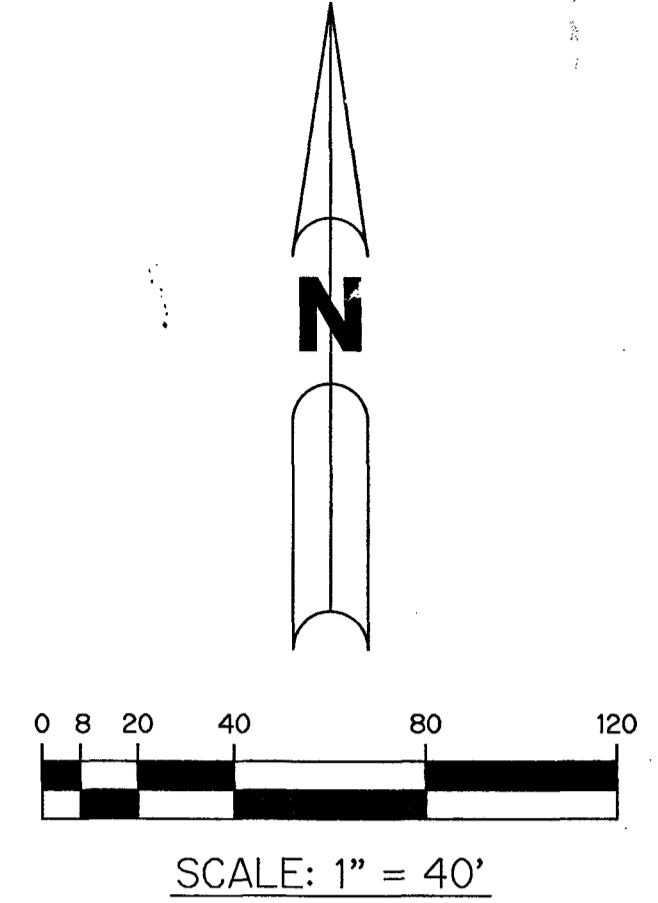


WHITWORTH AGR-PUD PLAT SIX

BEING A REPLAT OF A PORTION OF TRACTS 13 AND 36, AND A PORTION OF A ROAD, DYKE AND DITCH RESERVATION, ALL LYING WITHIN BLOCK 60, PALM BEACH FARMS CO. PLAT NO. 3, AS RECORDED IN PLAT BOOK 2, PAGE 45, PUBLIC RECORDS OF PALM BEACH COUNTY, FLORIDA, LYING WITHIN SECTION 31, TOWNSHIP 45 SOUTH, RANGE 42 EAST

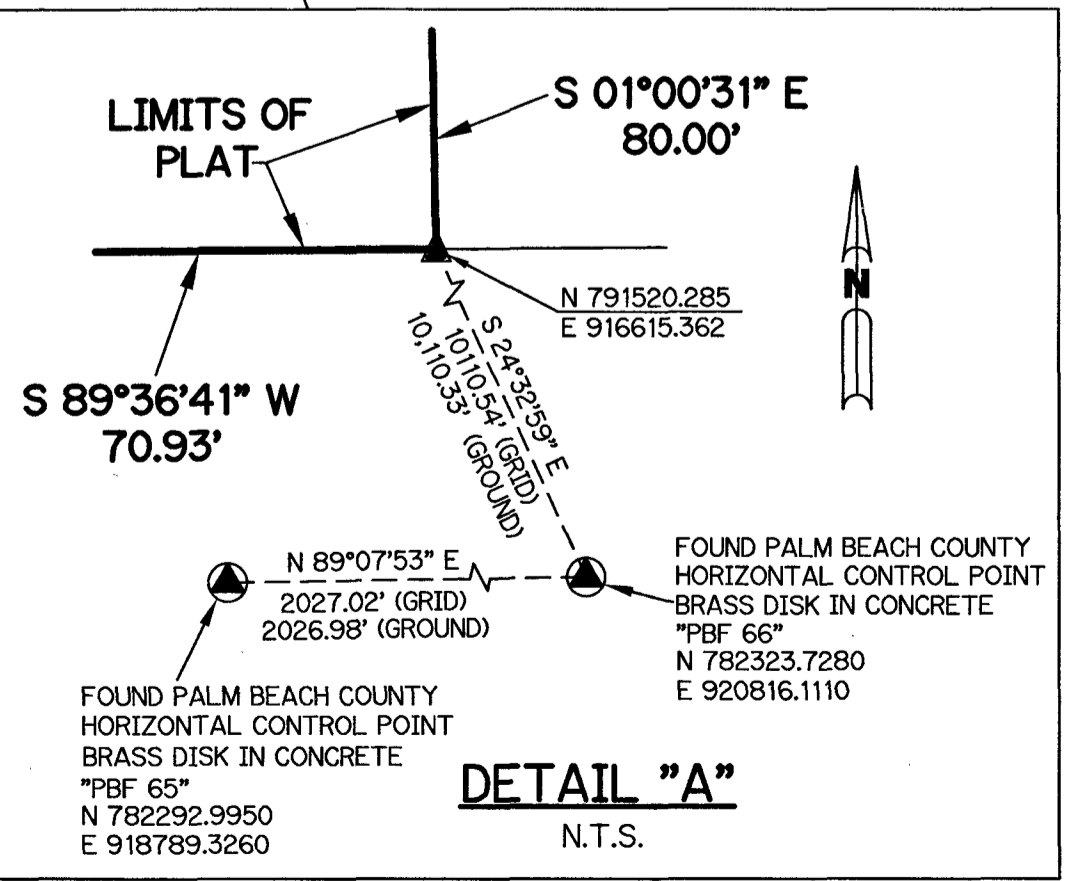
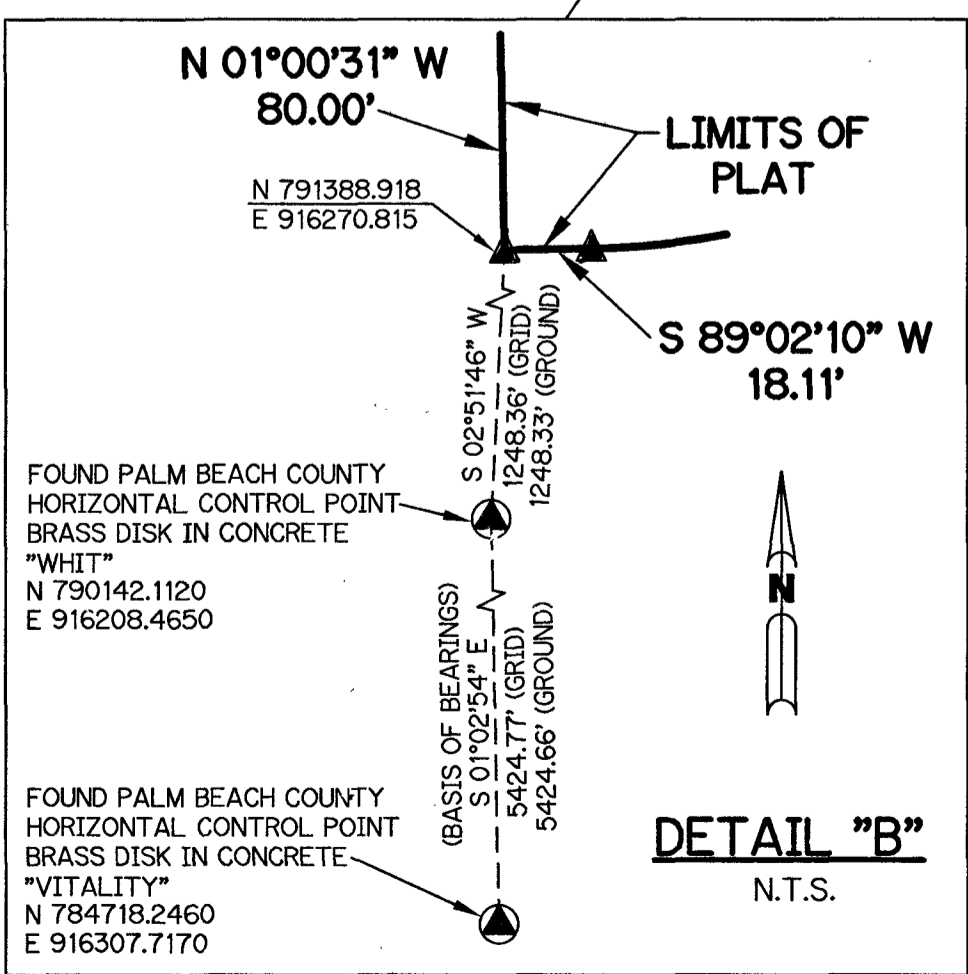
SHEET 2 OF 2

16



LEGEND:

■	- SET PERMANENT REFERENCE MONUMENT WITH 1.5" DISK STAMPED PRM L.B. #7741	N.T.	- NON-TANGENT
□	- FOUND PERMANENT REFERENCE MONUMENT WITH 1.5" DISK STAMPED PRM L.B. #7741	N.T.S.	- NOT TO SCALE
▲	- SET PERMANENT REFERENCE MONUMENT WITH 5/8" IRON ROD 1.5' IN LENGTH 1.4" CAP STAMPED PRM L.B. #7741	O.R.B.	- OFFICIAL RECORD BOOK
○	- FOUND PERMANENT REFERENCE MONUMENT NAIL WITH 1.25" DISK STAMPED L.B. #7741	O.E.	- MAINTENANCE & ROOF OVERHANG EASEMENT
○	- FOUND PERMANENT REFERENCE MONUMENT NAIL WITH 1.25" DISK STAMPED L.B. #7741	P.B.C.C.O.	- PALM BEACH COUNTY
AGR	- AGRICULTURAL	P.B.C.U.F.	- PALM BEACH COUNTY UTILITY EASEMENT
Δ	- DELTA ANGLE	P.B.	- PLAT BOOK
B.E.	- BUFFER EASEMENT	P.C.	- POINT OF CURVATURE
BLK	- BLOCK	P.C.C.	- POINT OF COMPOUND CURVATURE
CB	- CHORD BEARING	P.C.P.	- PERMANENT CONTROL POINT
CH	- CHORD DISTANCE	P.D.E.	- PUBLIC DRAINAGE EASEMENT
⊕	- CENTERLINE	PG.	- PAGE
D.B.	- DEED BOOK	PGS.	- PAGES
D.E.	- PRIVATE DRAINAGE EASEMENT	P.O.B.	- POINT OF BEGINNING
F.P.L.	- FLORIDA POWER & LIGHT	P.N.R.I.	- POINT OF NON-RADIAL INTERSECTION
L	- ARC LENGTH	P.N.T.I.	- POINT OF NON-TANGENT INTERSECTION
L.A.E.	- LIMITED ACCESS EASEMENT	P.O.C.	- POINT OF COMMENCEMENT
LB	- LICENSED BUSINESS	P.O.I.	- POINT OF INTERSECTION
L.M.A.E.	- LAKE MAINTENANCE ACCESS EASEMENT	P.R.C.	- POINT OF REVERSE CURVATURE
L.M.E.	- LAKE MAINTENANCE EASEMENT	P.R.I.	- POINT OF RADIAL INTERSECTION
L.W.D.D.	- LAKE WORTH DRAINAGE DISTRICT	P.S.M.	- PROFESSIONAL SURVEYOR AND MAPPER
NR.	- NOT RADIAL	P.T.	- POINT OF TANGENCY
N.R.T.R.	- NOT RADIAL TO REAR LINE	PLD	- PLANNED UNIT DEVELOPMENT
		R	- RADIUS
		RAD	- RADIAL
		R/W	- RIGHT-OF-WAY
		R.D. & D.	- ROAD, DYKE AND DITCH RESERVATION
		SIRC	- SET 5/8" IRON ROD & CAP STAMPED "PRM LB7741"
		SN&D	- SET MAGNETIC NAIL & DISK STAMPED "PRM LB7741"
		S.T.	- SURVEY TIE
		TYP.	- TYPICAL
		U.E.	- UTILITY EASEMENT
		N=780000.00	- STATE PLANE COORDINATE VALUE
		E=930000.00	- STATE PLANE COORDINATE VALUE



THIS INSTRUMENT WAS PREPARED BY
 PERRY C. WHITE, P.S.M. 4213, STATE OF FLORIDA
 SAND & HILLS SURVEYING, INC.
 8461 LAKE WORTH ROAD, SUITE 410
 LAKE WORTH, FLORIDA 33467
 LB-7741

NOTES:
 COORDINATES SHOWN ARE GRID COORDINATES DATUM = NAD 83 (1990 ADJUSTMENT)
 ZONE = FLORIDA EAST ZONE
 LINEAR UNIT = U.S. SURVEY FEET
 COORDINATE SYSTEM = 1983 STATE PLANE TRANSVERSE MERCATOR PROJECTION
 ALL DISTANCES ARE GROUND (UNLESS OTHERWISE NOTED)
 SCALE FACTOR = 1.00002026
 PLAT BEARINGS = GRID BEARINGS
 GROUND DISTANCE X SCALE FACTOR = GRID DISTANCE